



SaberCopy Utility 2.0

Introduction

The SaberCopy utility is designed for fast and simple copying of file structures to multiple removable drives such as USB memory sticks, SD memory cards, and other USB devices such as the [Saber hand wind digital player](#).

About The Saber

The SABER is an MP3/WMA player with a loud speaker. It features a hand wind generator to recharge the internal batteries. It can also work on external power sources such as AC/DC adapter, solar panel, or battery pack.

The SABER stores audio files on internal memory, or an optional SD memory card. Audio files can be copied to the SABER by USB cable from a computer.

About This Software

This software assists with copying of files from a PC to the SABER player or any other removable drive. It has several distinctive features:

- Files can be placed on the removable drive in a specific order. This is done by prefixing file and folder names with a sequence number, and stripping out the TITLE tag from MP3 files. (This can be turned off for copying non-audio files to other devices.)
- Copying can be done to multiple removable drives simultaneously. The state of each drive is clearly shown during the process.
- In Fast Copy Mode, copying will commence automatically as soon as a device is plugged in. This speeds up the copying process when there are dozens or even hundreds of devices to copy to.
- Collections of files and copying options are defined in a Saber Project file which can be saved for later reuse. A manifest of the contents on a Saber can be printed for users.

System Requirements

This software requires Microsoft Windows 2000/XP/Vista or compatible operating system.

SaberCopy Concepts

Saber Projects

A Saber Project defines a collection of files and folders to copy, and the options that are to be used in the copying process. Projects can be saved and reused. Depending on the Mode of operation, multiple Projects may be active at the same time.

Saber Projects define a list of folders and/or individual files, and the name of the directory to which they are to be copied on the removable drive.

Saber Project definitions are stored in files with a “.saber” file extension.

Project Options

There are a number of options that control the copying process for a project:

- **Perform Read/Write Test:** If selected a simple copy/verify/erase operation is performed on each drive prior to copying, to ensure reads and writes to the drive are functioning normally. This test itself is not destructive of any data already on the destination drive. If the Read/Write test fails, then no further copying will be done to that drive.
- **Delete Existing Files:** If selected, all existing files on the destination drive will be erased prior to copying. *IMPORTANT NOTE: In Fast Copy Mode, no additional warning will be given before deleting files.*
 - **Keep Files in Root Directory:** If selected, any existing files in the root directory will not be deleted. This may be useful when copying to Saber devices, as various documents and this SaberCopy software may be preloaded into the root directory, and it may be helpful to preserve those file intact.
- **Saber Style Folders and Files:** If selected, then the following four Advanced options are all activated, otherwise these options can be selected individually:
 - **Sequence Folder and File Names:** If selected, then a six digit number if added as a prefix to all folder and file names to ensure the sequence of files on the destination drive is preserved, even if the destination drive only sorts on short file names.
 - **Strip MP3 Title Tags:** If selected, then the Title ID3 tag is blanked out in the copy of the file on the destination drive. The original file is not changed.
 - **Single Level of Folders:** If selected, this prevents nested folders being copied to the destination drive. This option is usually recommended for copying MP3 music collections to CDs or MP3 players.
 - **Leave Free Space on Drive:** If non-zero, then a warning will be given if this number of MB will not be left free on the destination drive.
- **Add audio announcement at the beginning of every folder:** If selected, then a folder can be specified which contains a series of audio announcements. The series would normally be something in the form of a count, or other identifications which will help the listener on an audio device uniquely identify the beginning of each new folder.
- **Add audio announcements before every track:** If selected, then a folder can be specified which contains a series of audio announcements. The series would normally be something in the form of a count, or other identifications which will help the listener on an audio device uniquely identify the beginning of each new track.

- **Add audio signal at the end of every folder:** If selected, then a file can be specified which contains an audio signal or short piece of music. This file will be something which will help the listener on an audio device uniquely identify the end of each folder.

Sample announcements and audio signals can be found in the “Announcements” subdirectory where SaberCopy is installed (usually “C:\Program Files\SaberCopy\”).

Device Options

SaberCopy will only copy to removable drives attached to your computer. For your protection, it cannot change any data on fixed drives or network drives.

Each Project can be attached to one or more removable drives, but each drive can only be attached to one Project. This prevents multiple copying operations from competing with each other. It does allow different content to be copied to different drives at the same time.

Drives can be completely disabled so that they cannot be attached to any Project. This may be used to prevent inadvertently changing or deleting files from removable hard drives or other specific devices you do not wish to change. This option is particularly important when using Fast Copy mode. Disabled drives are remembered next time SaberCopy is run.

Operating Modes

There are two modes of operation

1. **Standard Mode** allows multiple Projects to be open at once. Each Project may be manually linked to one or more destination drives. Copying of the files in each Project is initiated at the click of a button, and a prompt is given before any files are removed from the destination drive. This mode is ideal for ad-hoc copying tasks, and for when different content is to be copied to different drives.
2. **Fast Copy Mode** allows only one Project to be open. The Project is automatically linked to every removable drive (except drives that are disabled), and copying commences automatically as soon as any drive is attached to the computer. *IMPORTANT NOTE: No prompts are given before overwriting data on the destination drive.* This mode is ideal for fastest possible copying of the same content to dozens or even hundreds of drives.

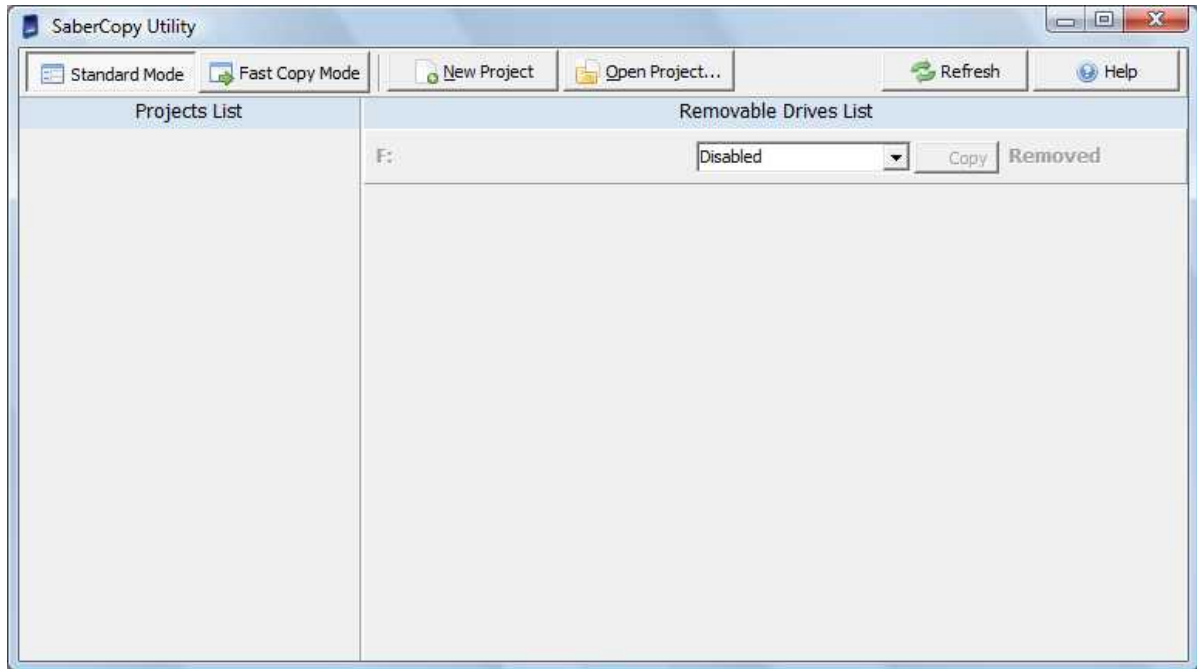
The program defaults to Standard Mode each time it is run.

What's New in Version 2

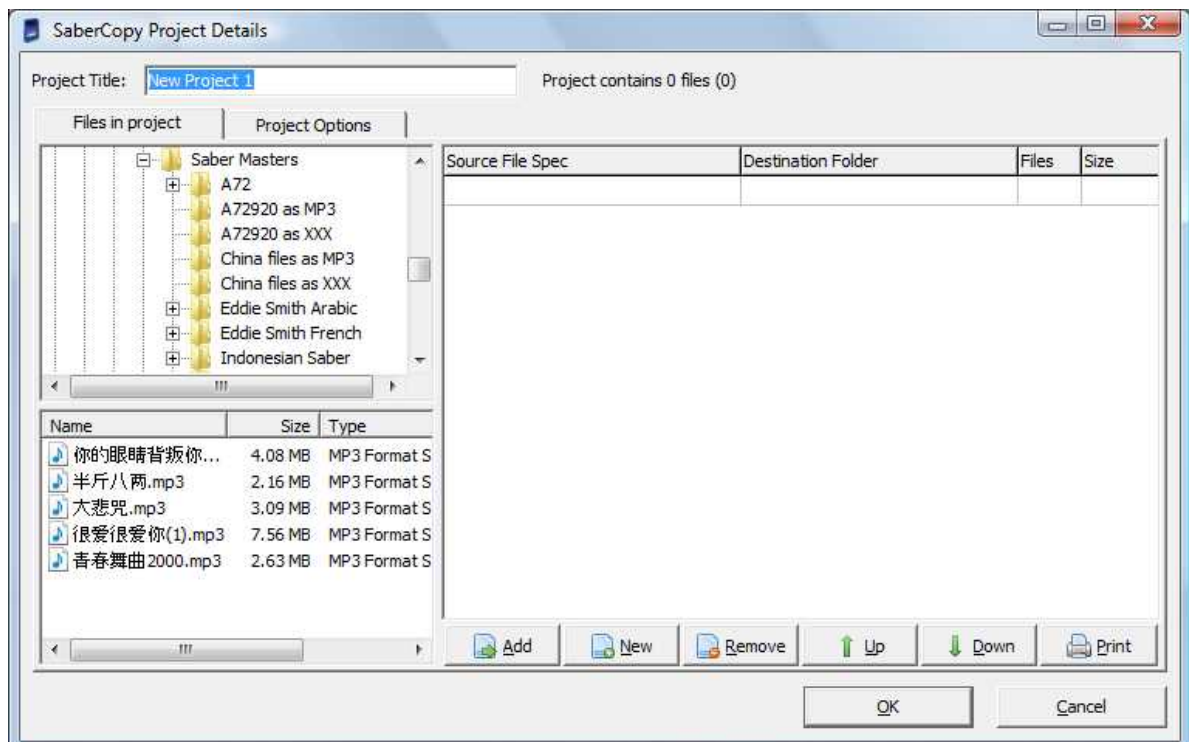
- Gather file/folder collections and options into a single Saber Project file.
- Specify multiple source folders, without having to copy the source files into a temporary directory.
- Sort files and folders within the Saber project, without requiring source files and folders to be renamed.
- Copy different projects to different drives at the same time.
- Limited ability to merge new files onto a drive with existing content.
- Faster copying of MP3 files which have no Title tag to remove.
- Delete Title tags from MP3 files with unicode filenames.
- Option to format removable drive.
- Prompt (in Standard Mode) before deleting all files from a removable drive.
- Option to not delete files in the root directory of the removable drive.
- Option to enforce single level folders, or recurse into more levels.
- Option to reserve free space on the removable drive.
- Options to add audio identification announcement to the start and end of folders, and before each track.
- Inclusion of sample audio identification announcements and sound effects.
- Print a manifest of folder names and file counts for a project.
- Automatically delete information about every Saber player from the Windows registry.

Using The Software

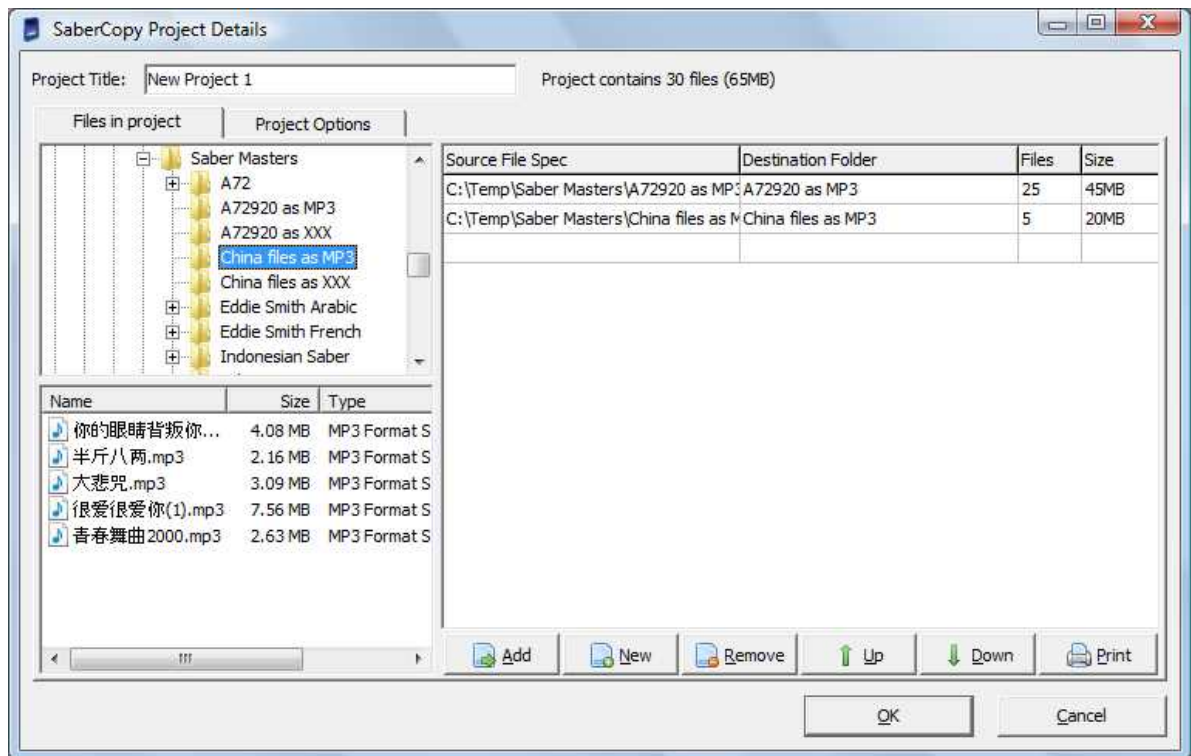
1. Run SaberCopy. The main window will be displayed. It will show all open Saber Projects on the left, and a list of currently attached removable drives on the right. The list of attached removable drives may also include card reader slots even though no card is actually inserted.



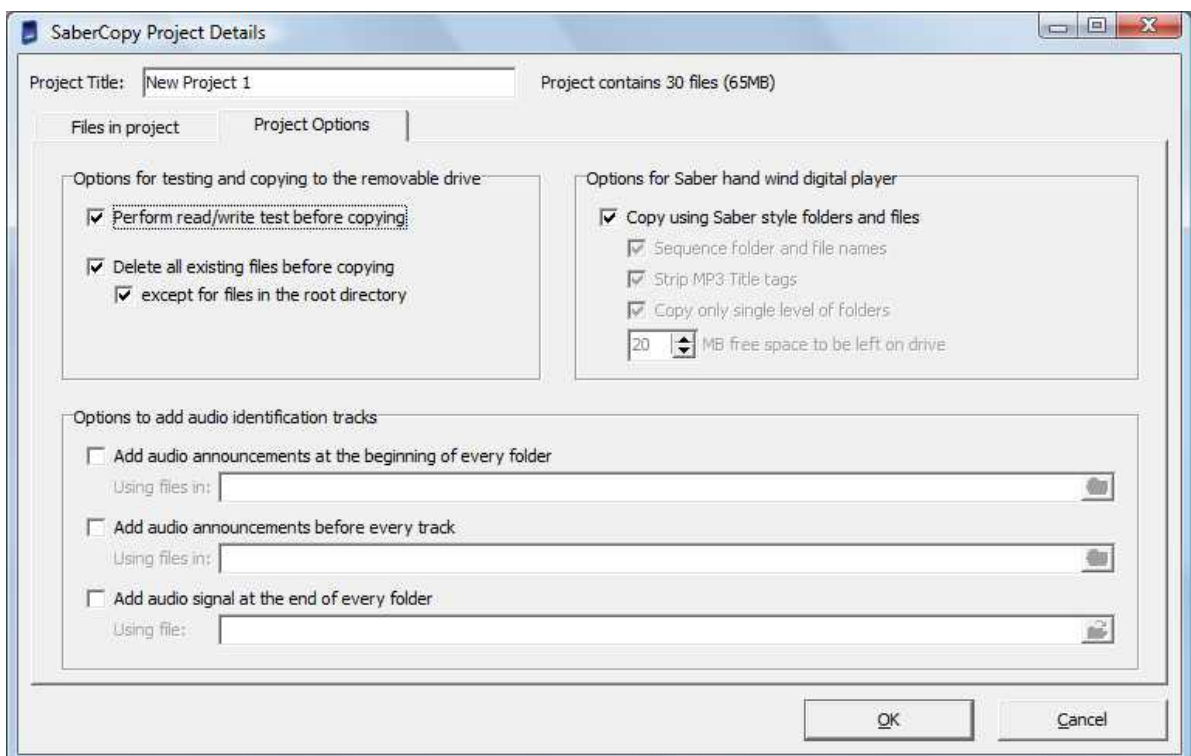
2. Create a Saber Project by clicking on the [New Project] button. The Project Details window will be shown.



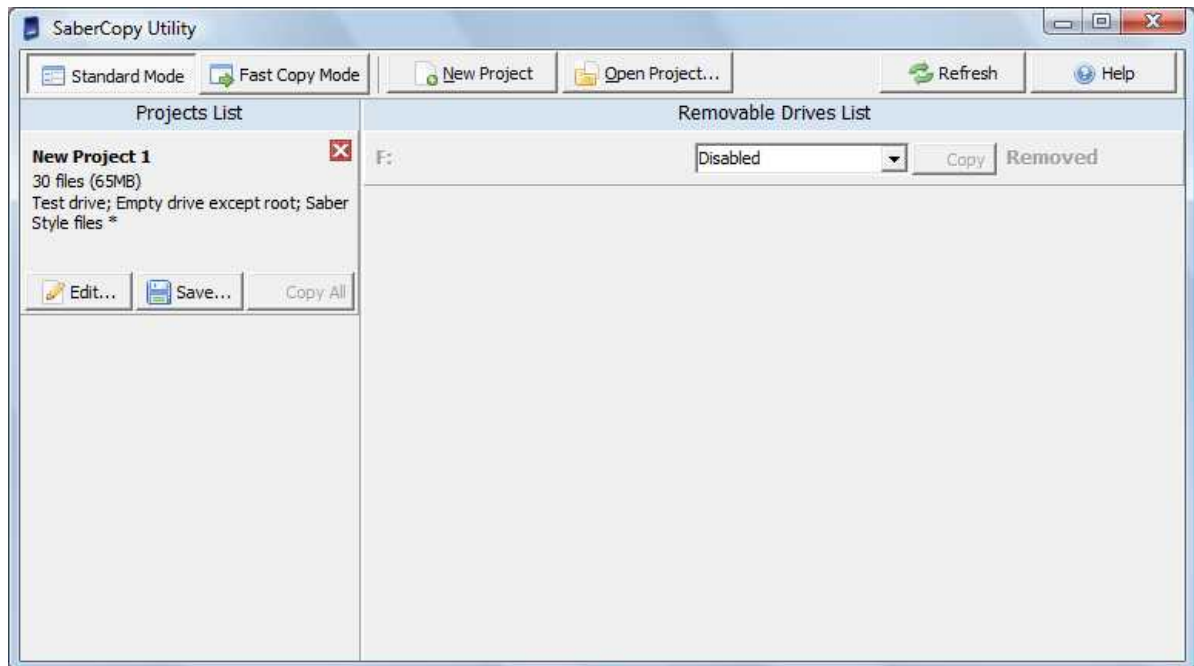
3. In the Project Details window, drag folders or files across from the folder tree or file list on the left, to the target list on the right. Folders and files are always added to the end of the target list, regardless of where on the target list they are dropped. Use the Up and Down buttons to change the sequence of the target list.



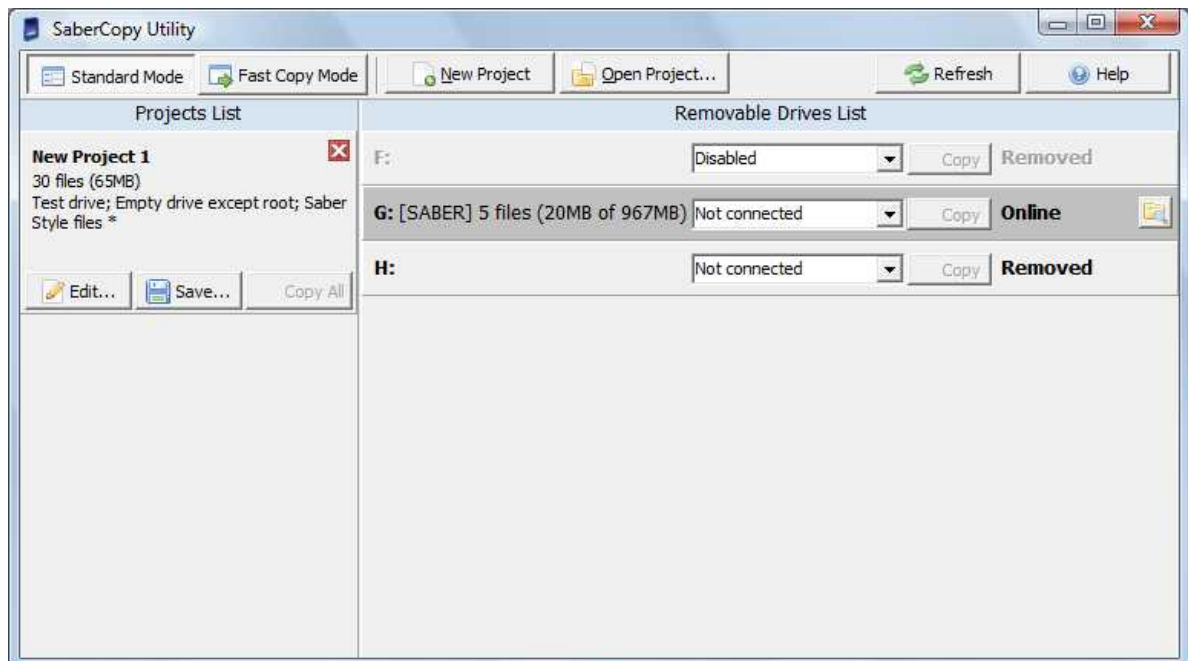
4. Click on the Project Options tab to select from the various options. If copying to Saber players, make sure you select the "Copy using Saber style" checkbox.



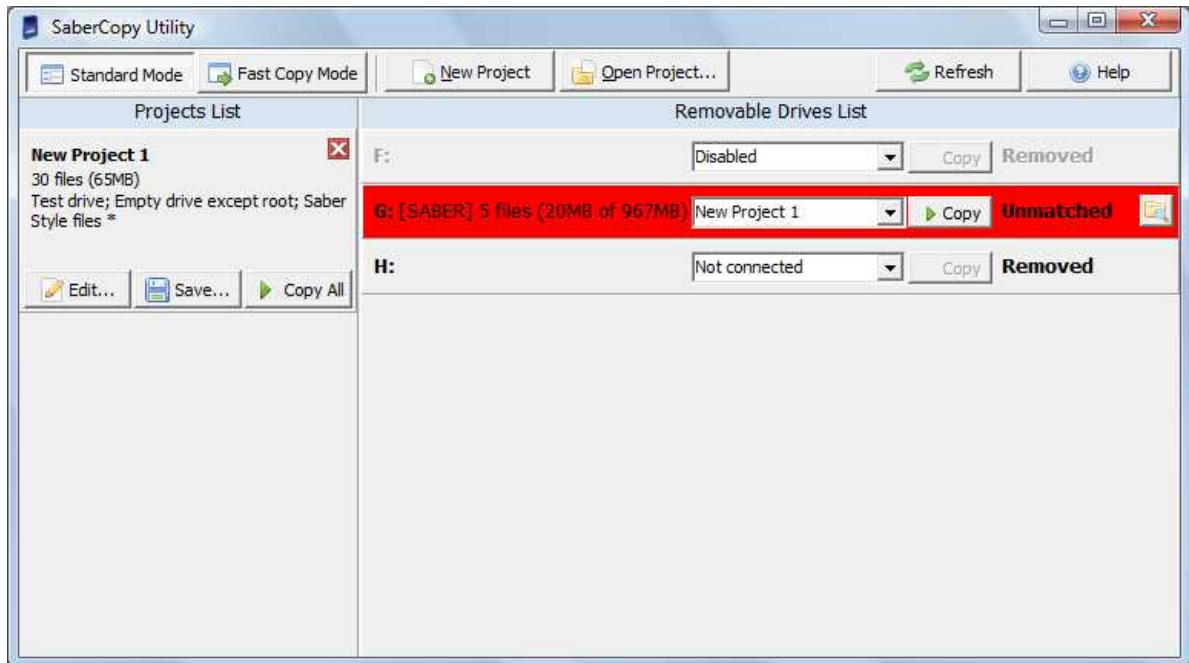
- Click [OK] on the Project Details window when complete. This will return you to the main window. The project will be shown in the Projects List on the left side of the window.



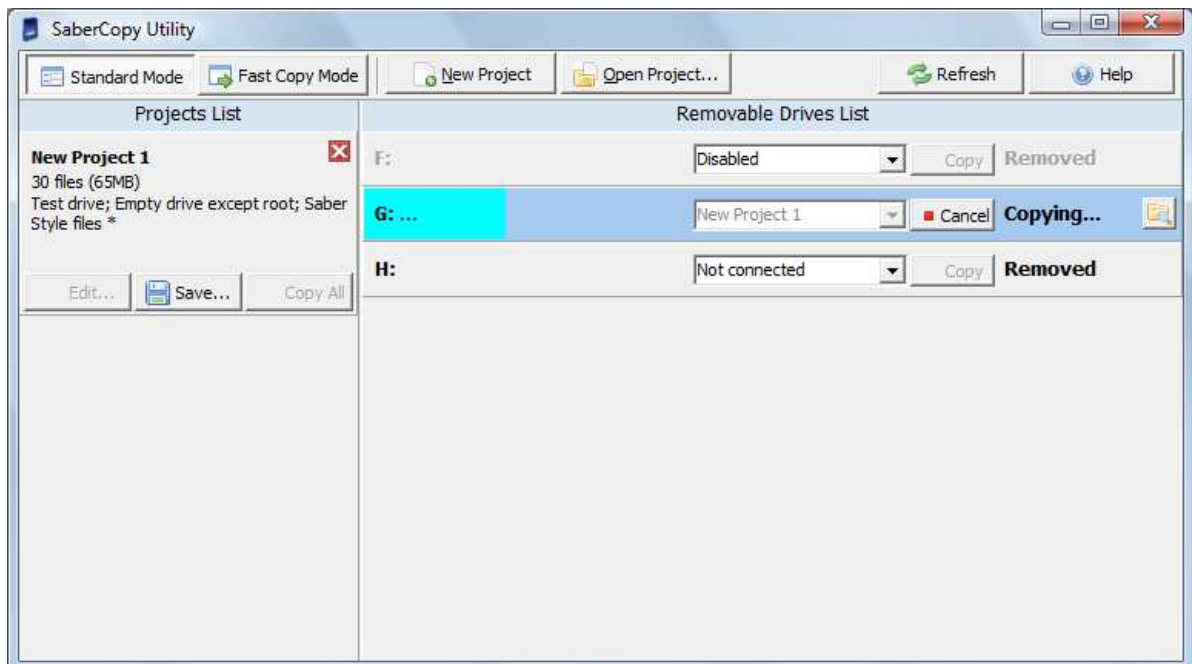
- Attach one or more removable drives to your computer. The drives will be shown in the Removable Drives List on the right side of the window. Note that Saber players will show up as two separate drives: one for the internal memory and one for the SD card reader.



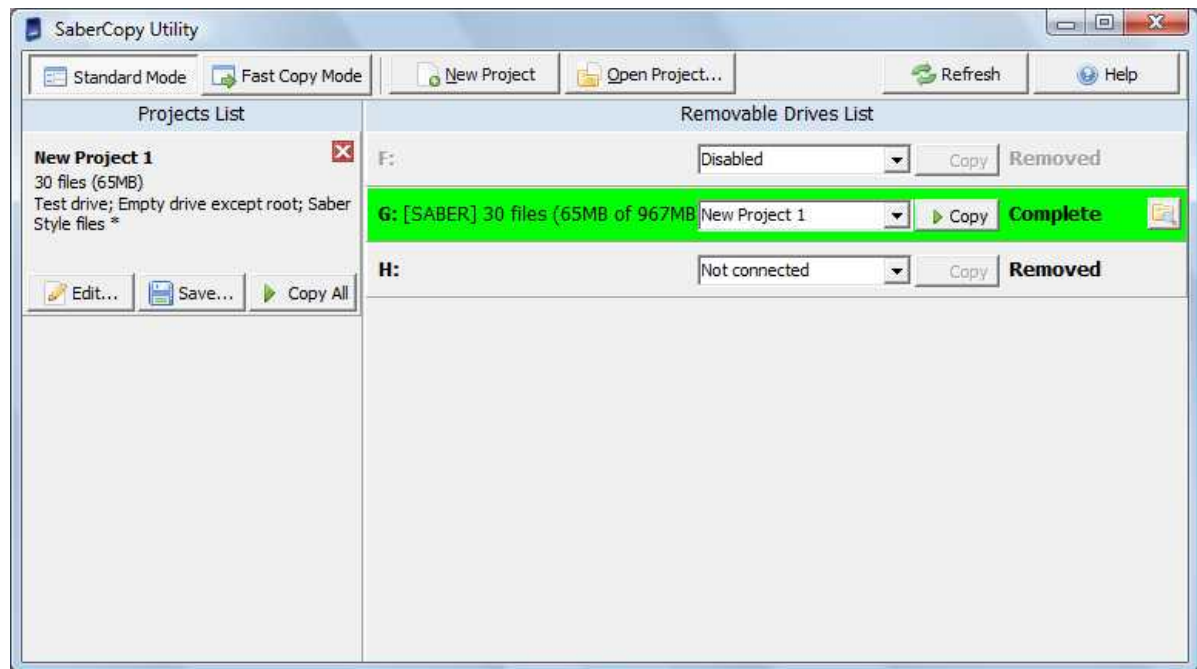
7. Connect projects to specific drives using the drop-down list on each drive, or you can drag and drop a project onto a drive, or a drive onto a project to connect them. Use the drop-down list to disable specific drives that you do not want to copy to or modify in any way. Drives that are connected to projects will automatically be checked to determine whether the files on the drive match the files in the project.



8. Once each drive is connected to the appropriate project, click on the [Copy All] button on the project, or the [Copy] button on each drive, to begin the copying process.



9. When copying is complete, the drive is again automatically checked to see if the files on the drive match the files in the project.



10. Remove the drive(s) and insert other drives to repeat the process.

Notes

- The utility may not always recognise when every removable drive is inserted or removed from your computer. In particular, SD cards are not always detected when inserted or removed from the Saber player or SD card reader. In this case, press the [Refresh] button (F5) to refresh the list of drives available to the utility.
- The utility does not handle multiple open projects that have the same Project Title. If there are more than one project with the same Title, then only the first such project can be connected to any removable drives.
- If you are copying to Saber players using the option to delete all files from the removable drive, then it may be advisable to also select the option to keep files in the root directory. This is because the Saber is normally delivered with this utility and other documentation in the root directory.
- If you are copying a lot of MP3 files that have Title tags which need to be removed, and you need to copy to many players, then it will speed up the process to first make a copy of the MP3 files with the Title tags stripped out, and then use these to copy to the Saber players. This saves SaberCopy from having to remove the Title tags every time each file is copied.
- The utility cannot strip Title tags from WMA files. If you want to copy these types of files to the Saber, you need to strip these tags out first using other audio file editing software.
- It is possible in some low-battery situations on the Saber player for individual files or even the whole filesystem to be corrupted. In this case, reformat the drive using the format utility in your computer, then copy the audio files back onto the Saber player using SaberCopy.

Support

This software is provided as-is, free of charge, with no warranty as to its accuracy or fitness for any particular purpose.

For more information about the SABER player see www.globalrecordings.net/saber

The author of this software can be contacted at saber@globalrecordings.net

This software is Copyright (c) 2009 by Global Recordings Network Australia. All Rights Reserved.

This software may be freely copied and distributed, provided it is copied intact with this file.